

PART OF THE SW.1/4, OF SEC. 27, T.6N., R.1W., S.L.B. & M.

91

NOB HILL ADDITION

TAXING UNIT: 25

SEE PAGE 97

BLOCKS 1 - 4

IN OGDEN CITY

SCALE 1" = 50'

SEE BELOW AT LEFT
CAPITOL STREET

SEE BOOK 2, PAGE 68

CUSTER AVENUE

POLK AVENUE

SEE BOOK 2, PAGE 69

CUSTER AVENUE

POLK AVENUE

SEE PAGE 89

SEE BOOK 2, PAGE 69

SEE PAGE 89

SEE BOOK 2, PAGE 70

SEE PAGE 90

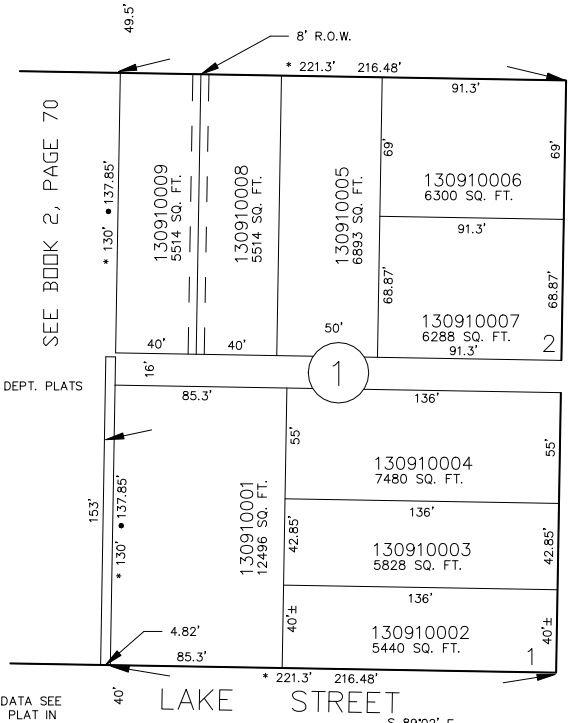
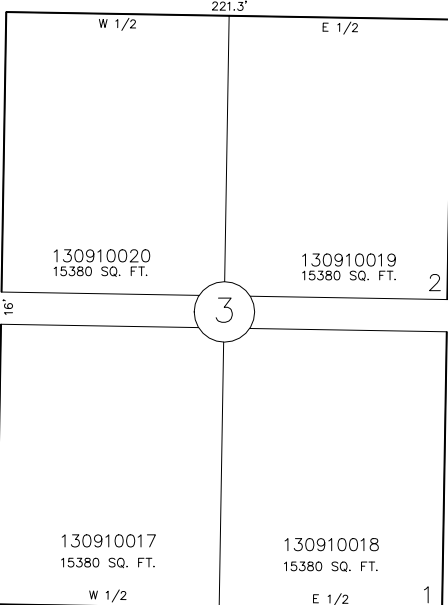
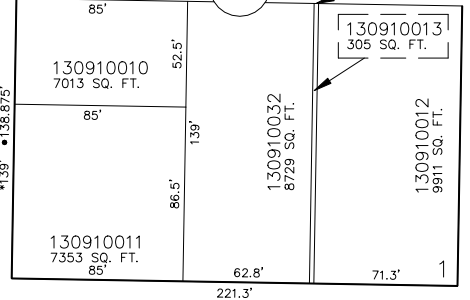
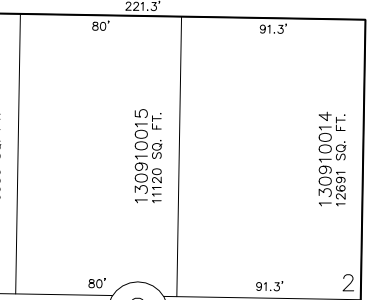
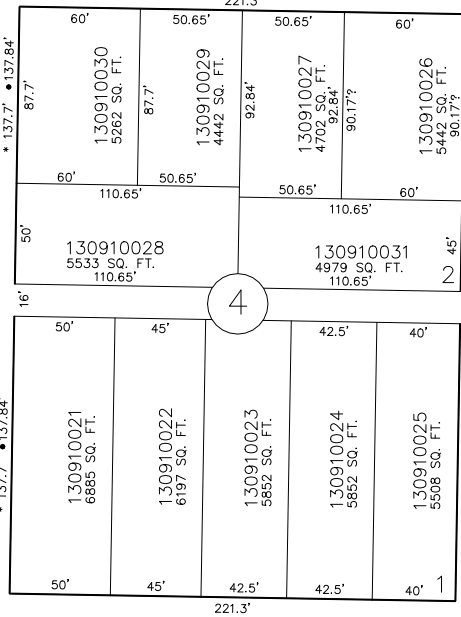
- OGDEN CITY ENG. DEPT. PLATS
- ORIG. DED. PLAT

FOR COMPLETE ENG. DATA SEE
ORIGINAL DEDICATION PLAT IN
BOOK 6, PAGE 1 OF RECORDS.

SEE BOOK 2, PAGE 70

JPS 3-94

CAHOON STREET



CAPITOL STREET

LAKE STREET

SEE ABOVE AT RIGHT